



537 E. 28th Division Highway, Lititz, PA 17543  
 PHONE: (717) 626-9560 FAX: (717) 626-7810  
 EMAIL: [Adam@FoxSheds.com](mailto:Adam@FoxSheds.com)

## Double Wide Garage

### Pre-Built & Delivered in 2 Halves (A-Frame)

### Built on Site (A-Frame)

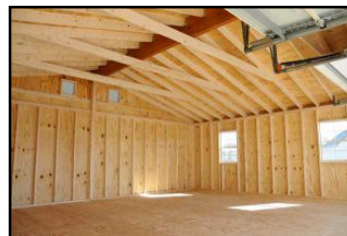
Size	Dura-Temp Painted	Vinyl Siding
20x20	\$6,887	\$7,695
20x24	\$7,753	\$8,381
20x28	\$8,455	\$9,124
20x32	\$9,448	\$10,198
20x36	\$10,623	\$11,261
24x20	\$8,056	\$8,796
24x24	\$8,763	\$9,495
24x28	\$9,858	\$10,729
24x32	\$10,952	\$11,898
24x36	\$12,047	\$13,142
28x24	\$10,097	\$10,995
28x28	\$11,622	\$12,706
28x32	\$12,541	\$13,546
28x36	\$14,592	\$15,756

Size	Dura-Temp Painted	Vinyl Siding
20x20	\$9,528	\$10,734
20x22	\$9,964	\$11,282
20x24	\$10,405	\$11,718
20x26	\$10,841	\$12,265
20x28	\$11,282	\$12,759
20x30	\$12,026	\$13,253
20x32	\$12,812	\$14,460
20x36	\$13,689	\$14,677
24x20	\$10,623	\$11,941
24x22	\$11,059	\$12,541
24x24	\$11,781	\$13,142
24x26	\$12,217	\$13,965
24x28	\$12,706	\$14,789
24x30	\$13,471	\$15,639
24x32	\$14,992	\$17,312
24x34	\$15,809	\$18,354
24x36	\$16,687	\$19,215
24x40	\$17,882	\$20,464
28x24	\$14,035	\$16,436
28x28	\$16,442	\$18,902
28x32	\$18,567	\$21,028
28x36	\$21,028	\$22,367

Prices Include Set-up & Deliver within 20 Miles from our Facility (Additional Milage Extra)

#### Standard Features :

- Two 2" x 14" (or larger) LVL Beams for Center Support - **No Cumbersome Center Wall Needed**
- Premium 2" x 6" Rafters & Rafter Supports
- Rafter Joist Hangers
- Pressure-Treated 4" x 4" Runners
- Pressure-Treated 2" X 4" Floor Joists 8" on Center
- Premium 2" x 4" Wall Studs (7' Wall Height)
- Premium 2" x 6" Center Wall Supports
- 5/8" G.P. Exterior Grade V600 5-Ply Floor
- Maintenance Free Vinyl Siding Exterior or Hardy Dura-Temp Painted Wood Siding
- Tar (felt) paper under shingles
- Two Overhead Garage Doors
- 4 - 12" Gable Vents
- Three 24" x 36" Single Hung Windows with Screens and Shutters
- 1/2" Sheathing on Walls and Roof
- Choice of Plywood or OSB Walls and Roofing
- 30 Year Warranty Shingles
- One Pre-Hung Steel Single Entry Door
- All Joined with High Grade Fasteners (Lags, Bolts, Nuts & Washers)



#### Standard Features :

- Includes B.O.S & Delivery within 120 Miles From our Facility**
- Premium Engineered Truss 24" OC 4/12 pitch
- Pressure Treated Sill Plates
- NO FLOOR (Customer supplies Footers/ Cement Pad)
- Premium 2" x 4" Wall Studs (8' Wall Height)
- Maintenance Free Vinyl Siding Exterior or Hardy Dura-Temp Painted Wood Siding
- Tar (felt) paper under shingles
- Two Overhead Garage Doors
- Three 24" x 36" Single Hung Windows with Screens and Shutters
- 1/2" Exterior Grade Sheathing Walls and Roof
- Choice of Plywood or OSB Walls and Roofing
- 30 Year Warranty Shingles
- One Pre-Hung Steel Single Entry Door
- All Joined with High Grade Fasteners (Bolts, Nuts & Washers)
- One Pre-Hung Steel Single Entry Door
- Engineer Drawings Available for Additional Cost

